

THE FARMACY

SEPTEMBER NEWS

UK Martin-Gatton
 College of Agriculture,
 Food and Environment
 Cooperative Extension Service
 Scott County
 1130 Cincinnati Rd
 Georgetown KY 40324-8934
 (502) 863-0984
 Fax: (502) 863-2392
 extension.ca.uky.edu



Agent Remarks

August has come and gone in a blur. State Fair was a success. Between all the Cloverville and livestock exhibits Scott County was well represented. Now with September in full swing our office has open 4-H enrollment. Reach out to our office if you're interested.

September 15th to 21st is National Farm Safety and Health Week. This week serves as a yearly reminder to be safe during the fall harvest season. It also allows us to take time to reflect on farmer mental health. Studies show that farmer suicide rates are 2-5x higher than the national average. Farmers experience extreme stress this time of year so be sure to check in with local farmers. Call 988 the National Suicide and Crisis Lifeline if you are experiencing suicidal thoughts.

Be sure to take a look at some of the upcoming programs happening this fall and winter in the Central Kentucky area.

In This Issue

- Agent Remarks.....1
- Crops.....2
- Ag Economics and Policy.....3
- Forage News.....4
- September Recipe.....5
- Conservation Corner.....5
- Livestock.....6
- Wildlife.....7
- Events.....8-11



Cooperative Extension Service

Agriculture and Natural Resources
 Family and Consumer Sciences
 4-H Youth Development
 Community and Economic Development

MARTIN-GATTON COLLEGE OF AGRICULTURE, FOOD AND ENVIRONMENT

Educational programs of Kentucky Cooperative Extension serve all people regardless of economic or social status and will not discriminate on the basis of race, color, ethnic origin, national origin, creed, religion, political belief, sex, sexual orientation, gender identity, gender expression, pregnancy, marital status, genetic information, age, veteran status, physical or mental disability or reprisal or retaliation for prior civil rights activity. Reasonable accommodation of disability may be available with prior notice. Program information may be made available in languages other than English.
 University of Kentucky, Kentucky State University, U.S. Department of Agriculture, and Kentucky Counties, Cooperating.
 Lexington, KY 40506



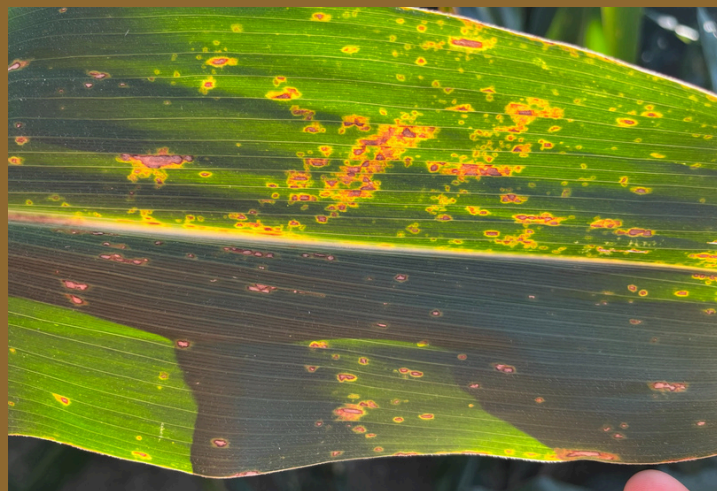
Crops

Multiple corn disease confirmed in Kentucky

-Kiersten Wise

There are multiple foliar diseases confirmed in Kentucky corn fields this year. Some are familiar and annually important diseases like gray leaf spot and southern rust, but newer diseases are also present in several areas of the state.

Click [HERE](#) to read more!



Return of the Fall Armyworm?

-Jonathan Larson

In 2021, Kentucky was one of many states that were impacted by a historic outbreak of fall armyworms. That year marked perhaps the worst year for the pest since the 1970s and has inspired fear and dread about these hungry, hungry caterpillars rearing their head again. In the past week, reports from western and central Kentucky have indicated that some folks are seeing fall armyworms in turfgrass areas. It doesn't seem to be at the same levels we experienced in 2021 but it doesn't hurt to review how this pest works and what can be done about it.

Click [HERE](#) to read more!



August WASDE, Crop Production Reports Buoy Expectations for Large Crops

-Betty Resnick

USDA's Crop Production Report and August World Agricultural Supply and Demand Estimates, published on August 12, confirms that we have very large crops in American fields, with corn, soybeans and other spring wheat projected to have record and above-trend yields in 2024. The August reports are the first of the year to estimate yields for corn and soybeans based on farmer surveys and satellite imagery. Additionally, planted and harvested acreage estimates were updated to incorporate certified acreage from the Farm Service Agency.

Click [HERE](#) to read more!



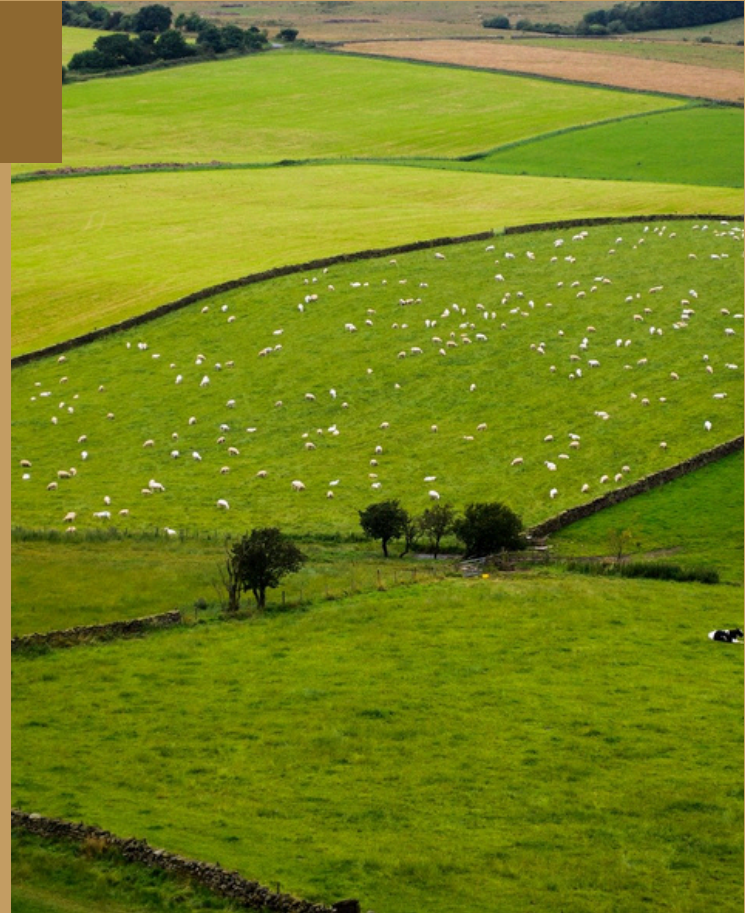
Ag Economics and Policy

2024 Farmland Values

-Steve Isaacs, University of Kentucky

According to USDA estimates from their annual Land Values Summary, Kentucky's average Farm Real Estate Values increased 7.5% in 2024 to \$5,300/acre, up from \$4,930 in 2023. Figure 1 is a comparison of Kentucky land values with the national trend since 2000. Kentucky's values trend generally with national values, exceeding the national average while trailing most Midwestern states. Kentucky's average Cropland Value increased from \$5,720/ac to \$6,220/ac (8.7%) while Kentucky's Pastureland Value was up 5.6% from \$3,570 to \$3,770/ac.

Click [HERE](#) to read more!



To Store or Not to Store? Old Crop Exit Strategies

-Grant Gardner

The June Grain Stocks report indicated 37% more corn and 44% more soybeans stored on-farm than last year, indicating that many producers still have grain in storage (Maples, 2024). Some of this stock has likely been sold, but many producers are still sitting on old crops, trying to determine whether to hold through harvest or sell. In this article, we discuss three facets of this decision: cutting losses (e.g. selling now), storage with an operating loan, and storage with cash flow using a hypothetical situation.

Click [HERE](#) to read more!



Forage News

Clover Root Curculio in Alfalfa

-Lee Townsend

Adult clover root curculios feed on plant foliage but most of the damage is caused by feeding of the larval stage on the root system. The grub-like larvae chew furrows which may entirely girdle the tap root of the plant. Damage is usually most severe in young stands of alfalfa following a legume, where large numbers of larvae are present in the soil. These insects are usually not a significant problem in established fields, although heavily damaged clover and alfalfa may wilt and die during dry weather.

Click [HERE](#) to read more!



Fall Pasture and Grazing Management

-Jessica A. Williamson

Fall pasture growth often provides additional opportunities for grazing livestock; however, careful management of pastures is essential for the over-wintering of forages and improvement into the next growing season. A dry end to our summer has stunted fall pasture regrowth dramatically, but as rains begin to increase in frequency in most regions, fall grazing is beginning to look a little more promising, but could be detrimental to your forage stand if not managed carefully.

Click [HERE](#) to read more!



Forage Timely Tips: September

- If not already done, soil sample and apply fertilizer as needed.
- Plant perennial grasses and legumes. Consider using a novel endophyte tall fescue.
- Harvest hay as needed. Do not harvest alfalfa after mid-September.
- Scout pastures, identify perennial weeds and woody brush. Consult an agricultural professional to determine the control strategy.
- Closely monitor livestock and do not overgraze. Pasture plants accumulate energy reserves in the fall that help them overwinter and regrow in the spring.
- Feed hay to allow pastures to stockpile for winter grazing.
- Rest native warm-season grass fields until after frost for better winter survival.



Tex-Mex Quinoa Salad

2-3 ears shucked corn	1 cup cilantro, chopped	Dressing:
1 cup quinoa, uncooked	1 cup cherry tomatoes, halved	½ cup lime juice
1 (15 ounce) can black beans, drained and rinsed	8-10 green onions, thinly sliced	1½ tablespoons red wine vinegar
1 cup fresh spinach, chopped	½ cup feta cheese crumbles	2 tablespoons olive oil
	1 small jalapeno, seeded, deveined, minced	1 teaspoon ground cumin
		1 teaspoon chili powder
		1 teaspoon honey
		Salt and pepper to taste

Fill a large saucepan with water and bring to **boil**, **add** corn and **cook** for 5 minutes or until tender. **Cool**. **Cut** corn from cob using a sharp knife. **Cook** quinoa according to package directions. **Whisk** together dressing ingredients in a small bowl. **Set** aside. When quinoa has cooled, **add** dressing and **stir** to coat. **In** a large

bowl combine remaining ingredients and **add** to the quinoa mixture. **Cool** in refrigerator and serve.

Yield: 8, 1 cup servings

Nutritional Analysis: 220 calories, 7 g fat, 1.5 g saturated fat, 5 mg cholesterol, 250 mg sodium, 32 g carbohydrate, 5 g fiber, 4 g sugars, 9 g protein.

Conservation Corner

Here are some ways the Scott County Conservation District can help you!

Backyard Conservation

Programs Include:

- Plant a Tree – 50% cost-share up to \$100
- Pollinator Plot – 50% cost-share up to \$100
- Rain Barrel Kit – 50% cost-share up to \$25.00
- Garden Cover Crop – Free bags of wheat seed

Scott County Conservation District
100 E Penn Ave (M-F 9:00 – 2:00pm),
502-863-2466, scottcountycd@yahoo.com

Local Cost Share

Programs Include:

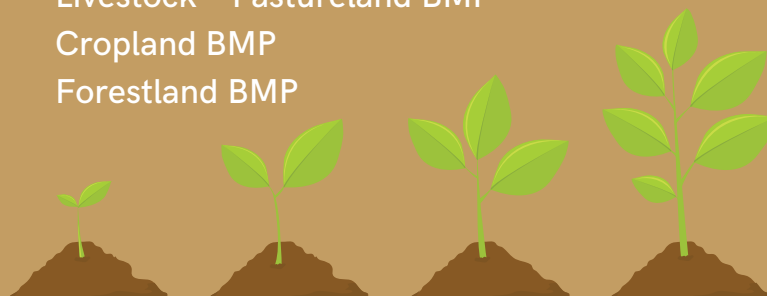
- Gateway, Barn Entrance & Heavy Traffic Corridor Erosion Control Program
- Pipeline and Waterer
- Cover Crop
- Pasture Renovation

State Cost Share

Applications accepted for 2025 funding until October 30, 2024

4 Areas of Interest:

- Livestock – Animal Feeding Operations (AFO)
- Livestock – Pastureland BMP
- Cropland BMP
- Forestland BMP



Livestock

Feeding distillers grains to beef cattle

-Alfredo DiCostanzo

Distillers grains supply rises with ethanol production in the Midwest. Producers that use distillers grains in beef cattle diets must understand and manage the following:

- Changes in the nutrient content of distillers grains.
- Storage and handling issues.
- Formulating diets.

Click [HERE](#) to read more!



Guide to Plants of Kentucky Potentially Poisonous to Livestock

-University of Kentucky



Poisonous plants are responsible for considerable losses to farmers and livestock producers in Kentucky. Many cases of plant poisoning are never diagnosed or even suspected. There are nearly 100 different species of plants growing in Kentucky that under certain conditions may be poisonous to livestock, although only one third of these are likely to cause serious trouble.

Click [HERE](#) to read more!

Marketing Lamb and Goat for Holidays

-Melanie Barkley

The American Sheep Industry has worked with the Department of Agricultural Economics at Texas A & M University and Agribusiness Food and Consumer Economics Research Center to study the non-traditional lamb market in the United States, which includes ethnic consumers. These researchers estimate that "minority populations account for about 58% of the total US lamb consumption and nearly three quarters of minority lamb consumers prepare lamb at home." The Lamb Resource Center now provides information on marketing to ethnic consumers on their website.

Click [HERE](#) to read more!



Wildlife

Dove Fields

How to attract birds to your hunting spot - legally

-Kentucky Department of Fish and Wildlife

Federal migratory bird regulations prohibit hunting mourning doves over bait. However, doves can be attracted both effectively and legally in Kentucky using managed fields. Fields managed as wildlife food plots, or where normal agricultural practices have occurred, are perfectly legal to hunt as long as there is no sweetening of the field with the addition of bait. Baiting includes placing grains, salt or other attractants in an area used for hunting.

Click [HERE](#) to read more!

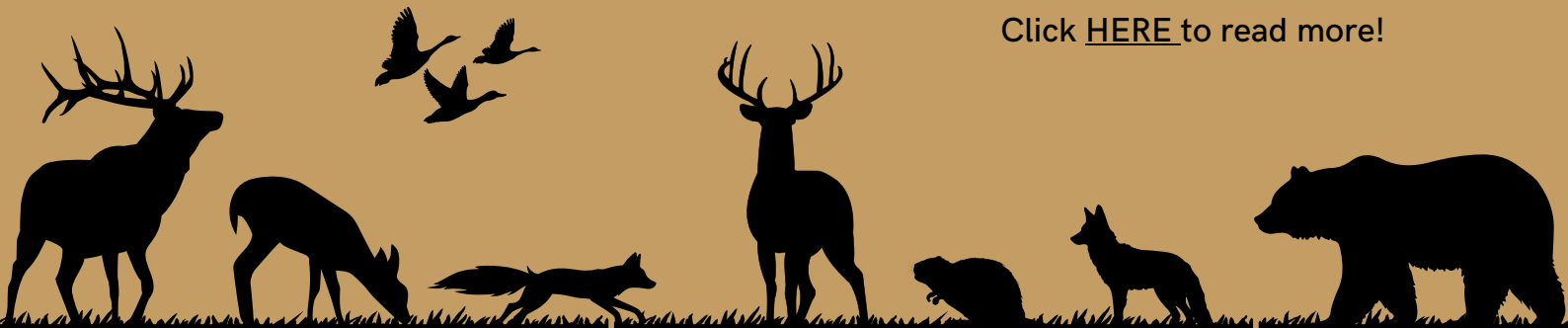


Coyotes in Kentucky

-Kentucky Department of Fish and Wildlife

Coyotes have long been established and common in suburban and urban centers, including Los Angeles, Chicago and Denver. In Kentucky, they are now commonly seen in all 120 counties. They are common everywhere but, for the most part, stay hidden from people. If you encounter a coyote, don't panic. Coyotes will typically avoid people unless we create a situation that invites them closer to our homes. It is essential that communities work together to maintain the natural fear that coyotes have of us and create an environment where coyotes and humans can better co-exist.

Click [HERE](#) to read more!



Kentucky Beef Conference



October 24, 2024

Fayette County Extension Office
1140 Harry Sykes Way
Lexington, Kentucky 40504

9:00—10:00

Registration, visit
sponsors

\$10 registration fee

**RSVP by October 22nd
to Fayette County
Extension Office
859.257.5582**

10:00—Welcome & Sponsor Recognition
Beau Neal, Woodford County Agriculture &
Natural Resources Extension Agent

University of KY Remarks & Welcome

Dr. Laura Stephenson, UK Director of Extension

Genomics Technology

Dr. Troy Rowan, University of Tennessee
Institute of Agriculture Beef Genetics
Extension Specialist

11:00— Marketing Update & Outlook

Dr. Kenny Burdine, UK Beef Economic
Extension Specialist

12:00 Lunch

1:00— Animal Tagging Update

Dr. Michelle Arnold, UK Extension Ruminant
Veterinarian

1:30— KY Beef Cattle Health Update

Dr. Steve Velasco, KY Department of
Agriculture State Veterinarian

2:00—Adjourn

**Cooperative
Extension Service**

Agriculture and Natural Resources
Family and Consumer Sciences
4-H Youth Development
Community and Economic Development

MARTIN-GATTON COLLEGE OF AGRICULTURE, FOOD AND ENVIRONMENT

Educational programs of Kentucky Cooperative Extension serve all people regardless of economic or social status and will not discriminate on the basis of race, color, ethnic origin, national origin, creed, religion, political belief, sex, sexual orientation, gender identity, gender expression, pregnancy, marital status, genetic information, age, veteran status, physical or mental disability or reprisal or retaliation for prior civil rights activity. Reasonable accommodation of disability may be available with prior notice. Program information may be made available in languages other than English.



Disability
accommodated
with prior notification.

September Events

FARM SAFETY WEEK

September 15th to 21st



2024 CENTRAL KENTUCKY HAY CONTEST

Is your hay the best?

Testing provides nutritional value of hay to assist in balancing rations, and can result in reduced feed cost, increased animal performance, and information to improve forage stands.

Free analysis to determine hay quality and livestock needs.

**Call the Scott County
Extension Office to sign up.
502-863-0984**



DEADLINE TO REGISTER:

OCTOBER 7, 2024



Join us for the 2nd Annual



Scott County Bale Trail

Decorate scarecrows or bales!

October 2024

Registration Forms accepted September 1-23.

Scott County Cooperative Extension Office

**1130 Cincinnati Road
Georgetown, KY 40324**



**All Proceeds Benefit
Scott Co 4-H Programs**



**Cooperative
Extension Service**

Agriculture and Natural Resources
Family and Consumer Sciences
4-H Youth Development
Community and Economic Development

MARTIN-GATTON COLLEGE OF AGRICULTURE, FOOD AND ENVIRONMENT

Educational programs of Kentucky Cooperative Extension serve all people regardless of economic or social status and will not discriminate on the basis of race, color, ethnic origin, national origin, creed, religion, political belief, sex, sexual orientation, gender identity, gender expression, pregnancy, marital status, genetic information, age, veteran status, physical or mental disability or reprisal or retaliation for prior civil rights activity. Reasonable accommodation of disability may be available with prior notice. Program information may be made available in languages other than English.



Disability
accommodated
with prior notification.

Legacy Cooperative Extension Service

Luncheons

LEARN HOW TO PRESERVE YOUR LEGACY
FOR GENERATIONS TO COME.

SESSION 1

Join us for lunch
while we cover:
Where do I begin to
protect my legacy?

SEPTEMBER 16,
11AM-1PM

SESSION 2

Join us for lunch
while we cover: Who
do I "trust"? What is
a trust? I have an
LLC do I need a
trust?

OCTOBER 21,
11AM-1PM

SESSION 3

Join us for lunch
while we cover:
What is a POA? Do I
need a health care
and a financial POA?
Who do I choose?

NOVEMBER 18,
11AM-1PM

SESSION 4

Join us for lunch while
we cover: What not to
do! Wrong advice and
information from
friends, Facebook, and
family.

DECEMBER 16,
11AM-1PM



Join us for lunch the 3rd Monday of September, October, November, and December. Learn about the best avenues to protect your legacy. To attend RSVP the Monday the week before the date of the session.

For questions or to RSVP call 502-863-0984 or email brittany.brewer@uky.edu
Sessions will take place at the Scott County Extension Office,
1130 Cincinnati Rd. Georgetown, KY 40324

MASTER HAYMAKER

A 5-SESSION SERIES TO HELP YOU IMPROVE
FORAGE PRODUCTION ON YOUR FARM

Sessions will begin at 5:30 pm and last approximately 2 hours

Participants must complete all 5 of the sessions to be certified

JANUARY 9TH- HARRISON CO.
JANUARY 16TH- BOURBON CO.
JANUARY 23RD- SCOTT CO.
JANUARY 30TH- HARRISON CO.
FEBRUARY 6TH- SCOTT CO.
FEBRUARY 13TH- LOUISVILLE

SOILS- HELP THEM HELP YOU
WARM SEASON FORAGES
COOL SEASON FORAGES
WEED & INSECT CONTROL
FORAGE HARVESTING & STORAGE
Field trip to the National Farm Machinery Show

Registration fee:

\$50

**Includes all meals, materials, farm sign, transportation
and 1 meal at Farm Machinery Show**

REGISTER BY CONTACTING YOUR LOCAL COUNTY ANR AGENT:



Bourbon

Lindsay Arthur

lindsay.arthur@uky.edu

859-987-1895



Harrison

Jessica Barnes

jessica.barnes2@uky.edu

859-234-5510



Scott

Brittany Brewer

brittany.brewer@uky.edu

502-863-0984

**Cooperative
Extension Service**

Agriculture and Natural Resources
Family and Consumer Sciences
4-H Youth Development

MARTIN-GATTON COLLEGE OF AGRICULTURE, FOOD AND ENVIRONMENT

Educational programs of Kentucky Cooperative Extension serve all people regardless of economic or social status and will not discriminate on the basis of race, color, ethnic origin, national origin, creed, religion, political belief, sex, sexual orientation, gender identity, gender expression, pregnancy, marital status, genetic information, age, veteran status, physical or mental disability or reprisal or retaliation for prior civil rights activity. Reasonable accommodation of disability may be available with prior notice. Program information may be made available in languages other than English.
University of Kentucky, Kentucky State University, U.S. Department of Agriculture, and Kentucky Counties, Cooperating.



Disabilities
accommodated
with prior notification.

Tire Collections



Harrison County

Sept. 5, 6, 7 at County Garage,
207 KY Hwy 32, Cynthia, KY 41031

Bourbon County

Sept. 19, 20, 21 at State Dept of
Highways Garage
1175 Clintonville Rd. Paris, KY 40361

Woodford County

Oct. 10, 11, 12 at State Dept. of
Highways Garage
360 Crossfield Dr. Versailles,
KY 40383

Franklin County

Oct. 17, 18, 19 at State Dept. of
Highways Garage
1900 US 127 South, Frankfort, KY 40601

Scott County

Oct. 24, 25, 26 State Dept of
Highways Garage
815 East Main, Georgetown,
KY 40324

Fayette County

Oct. 31, Nov. 1, 2 at City Property
1631 Old Frankfort Pike,
Lexington, KY 40504